


Enter your user name and password and hit OK

**Log On to Windows**

**Microsoft**  
Copyright © 1985-1999  
Microsoft Corporation

 Microsoft  
**Windows 2000  
Server**  
Built on NT Technology

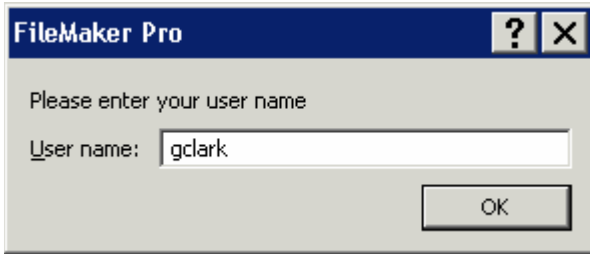
User name:

Password:

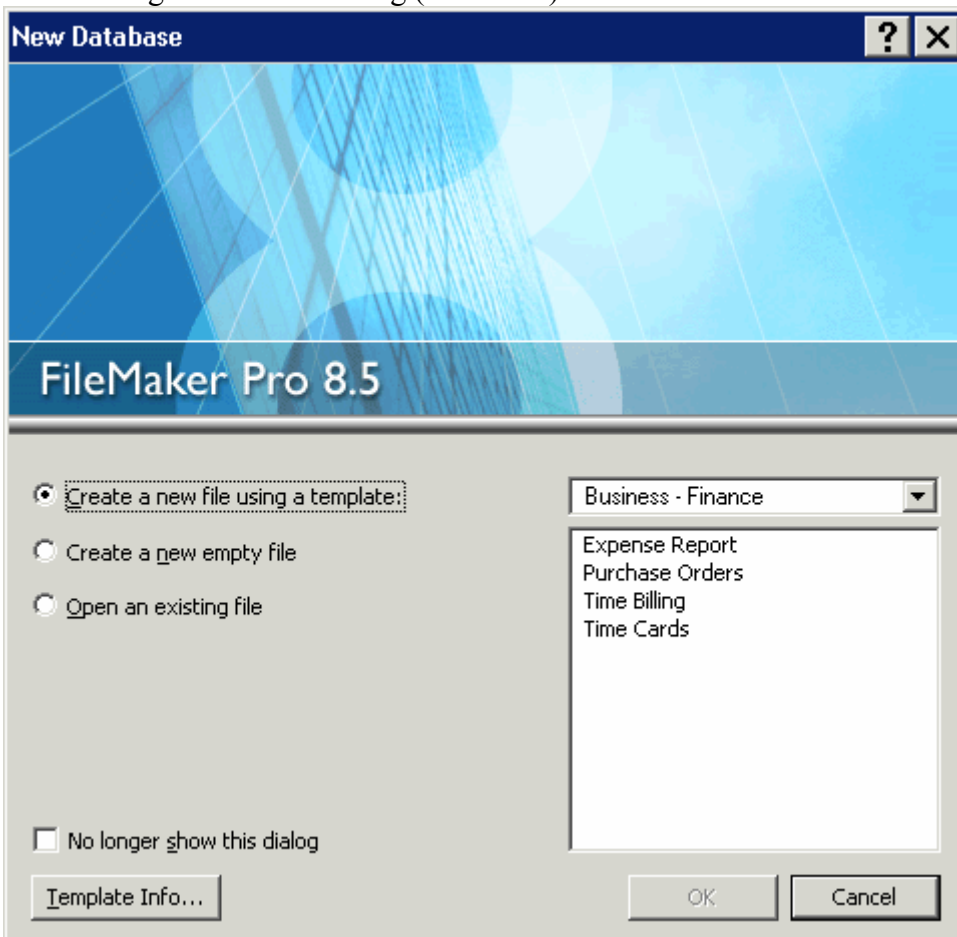
Log on to:  ▼

OK Cancel Shutdown... Options <<

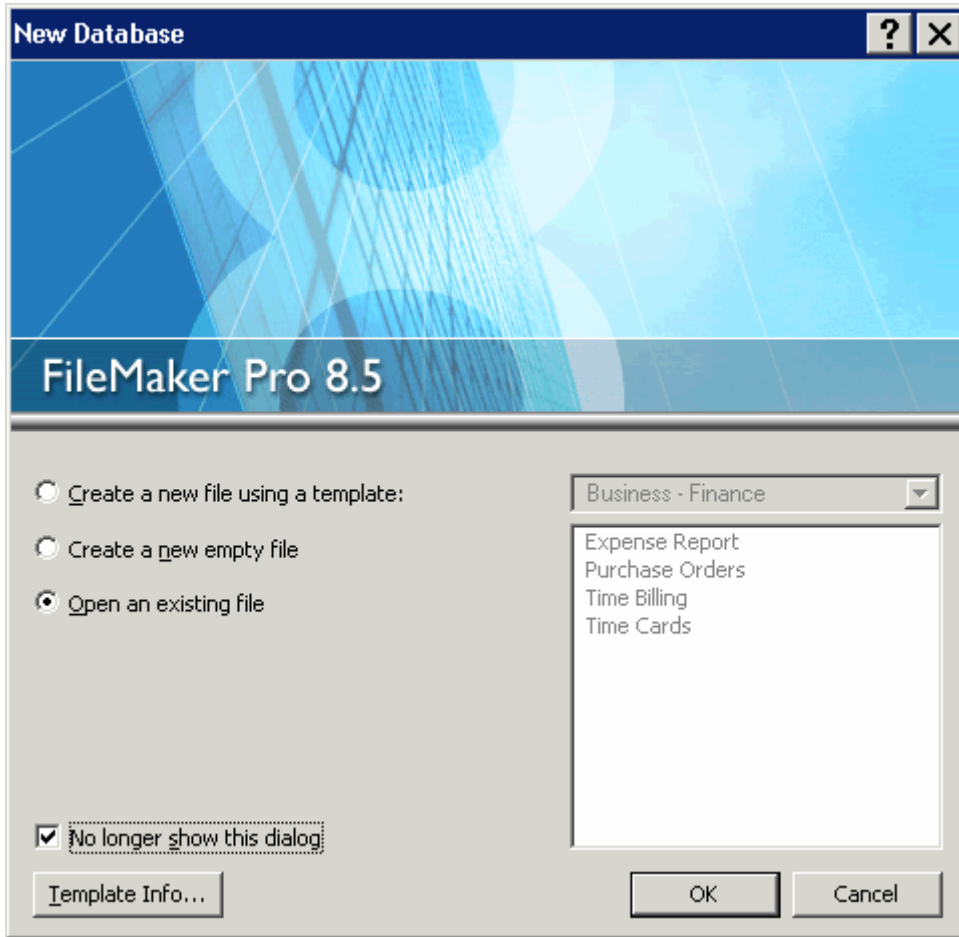
You may see this dialog, You may leave it as your first initial last name or put in your whole name. Hit OK



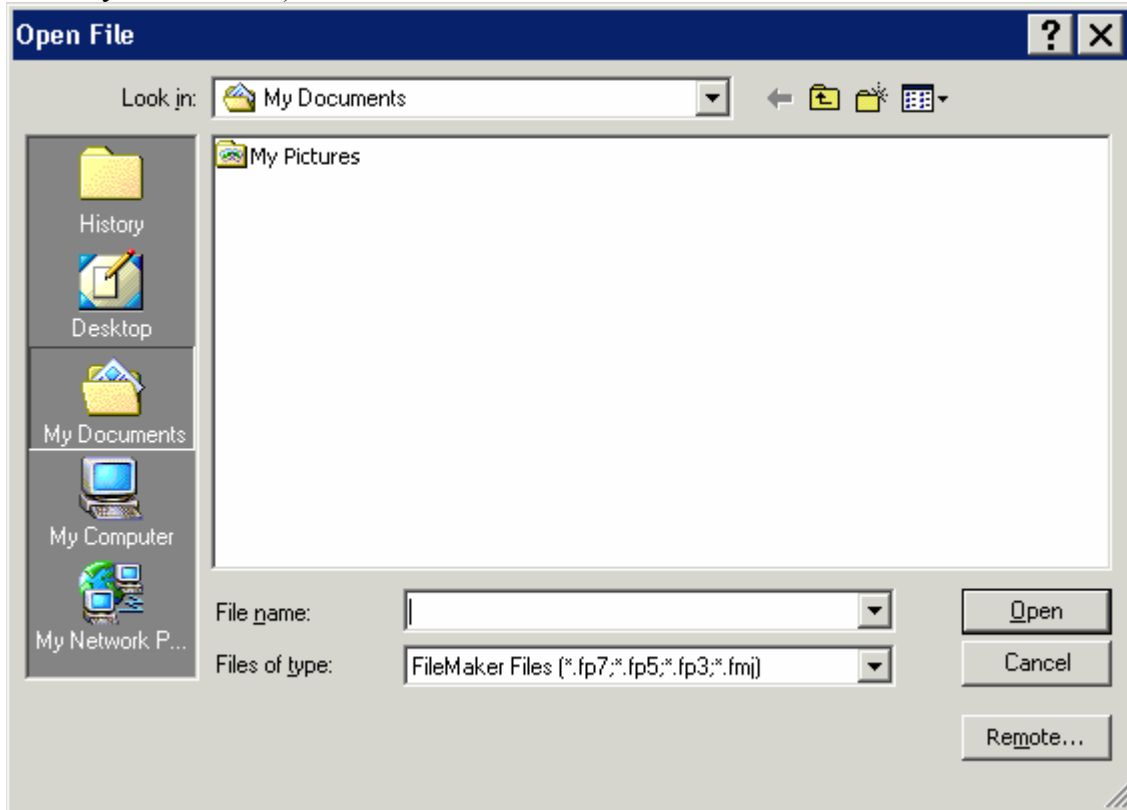
You will then see this New Database Dialog. Select Open an existing file and check the box No longer show this dialog (lower left)



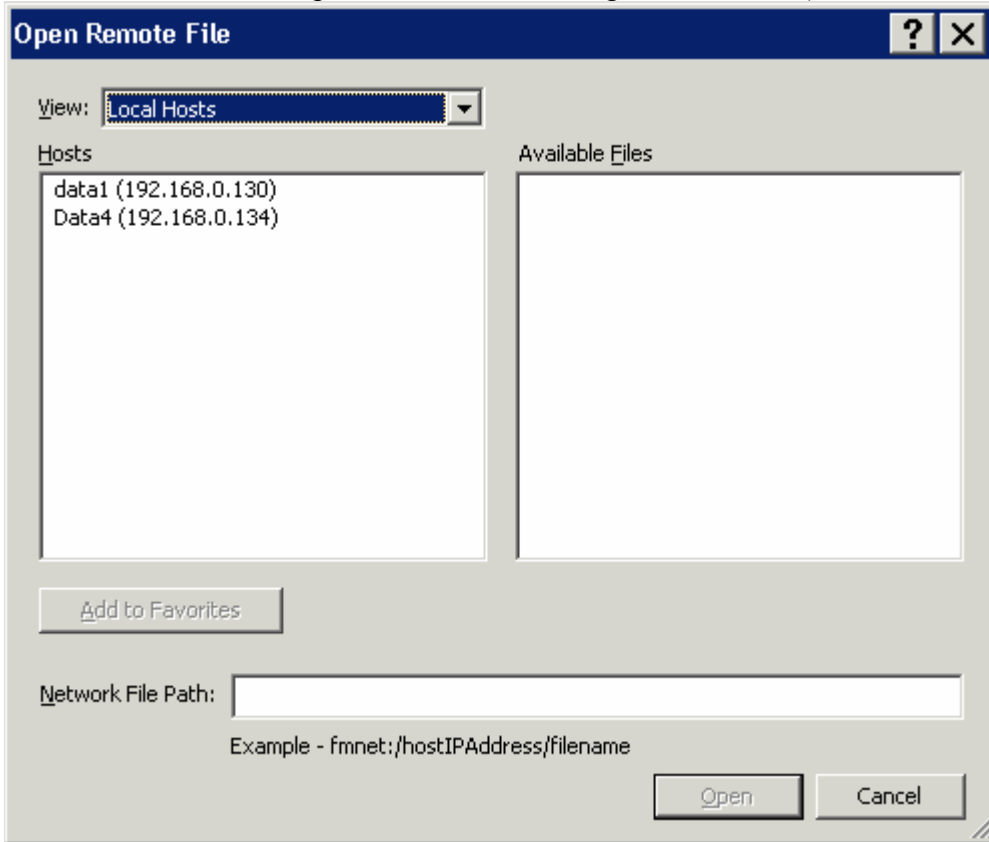
You will now see this. Hit OK



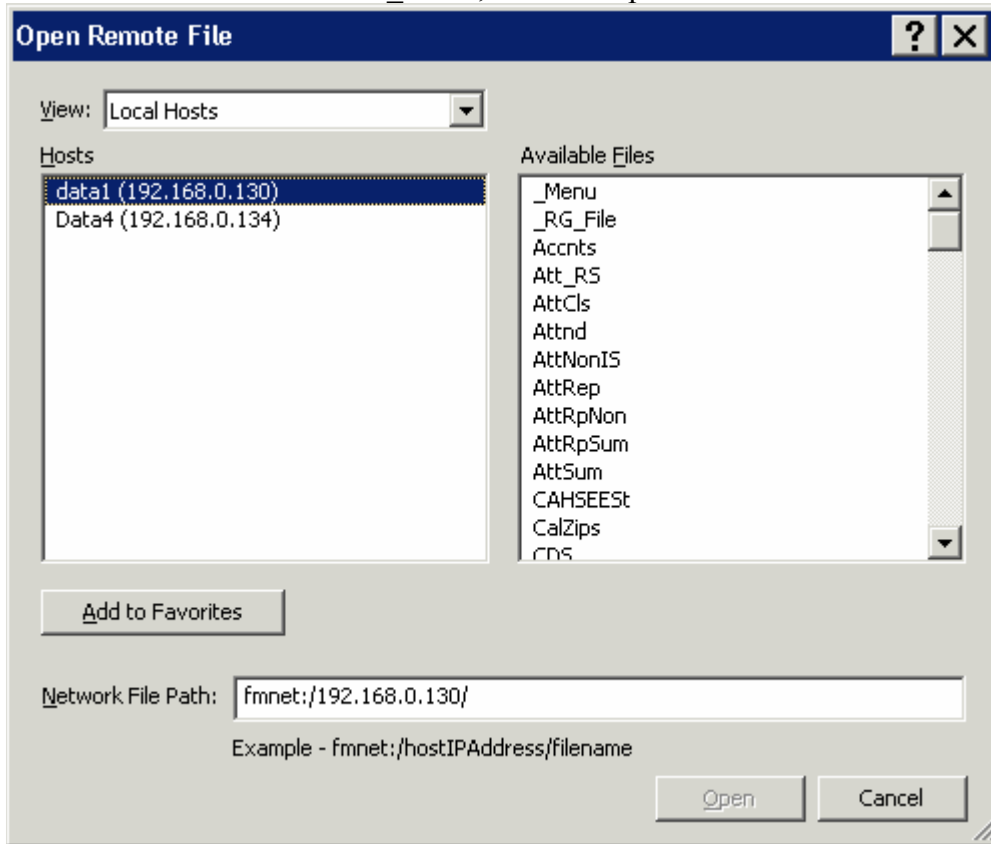
The Open file Dialog will open. Select the button on the lower right called Remote (was formerly called Hosts)



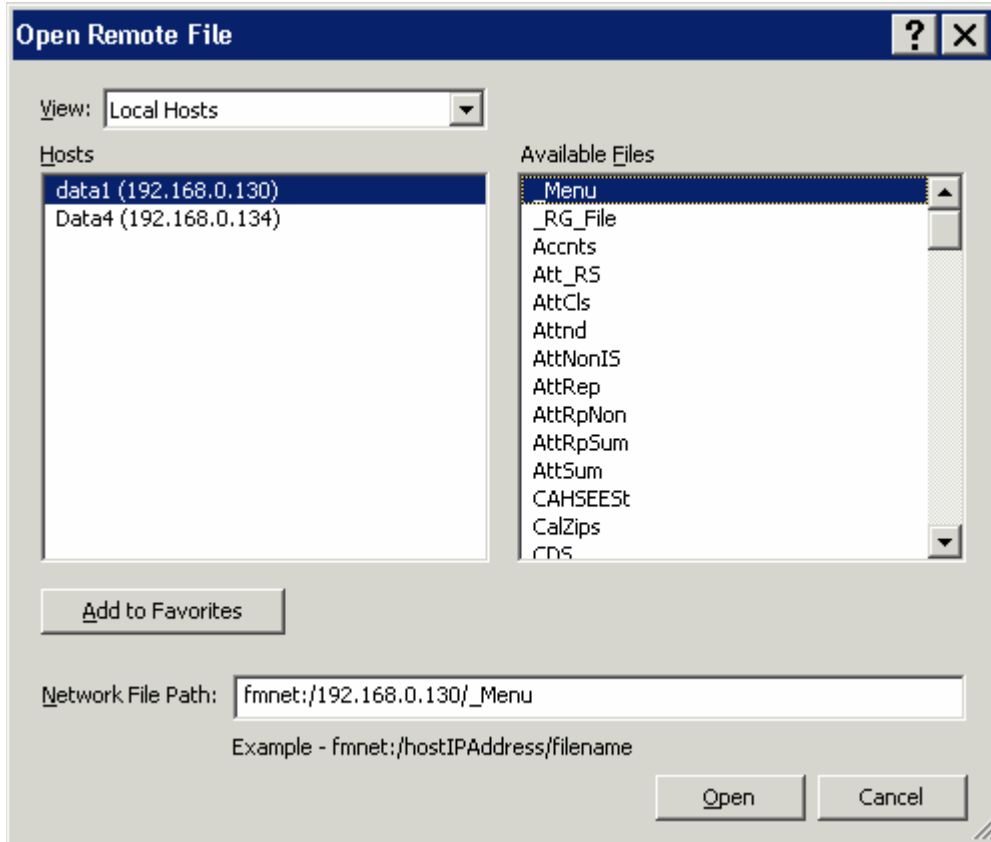
You will now see this Open Remote File Dialog. Select data1 (192.168.0.130)



You will now see this. Select `_Menu`, then Hit Open



You will now see this. Hit Open



The familiar layout where you enter your ES code and password will appear and you should proceed as usual

